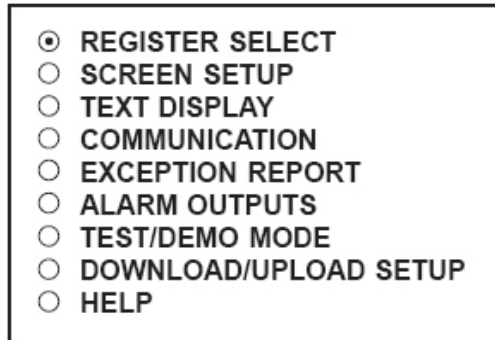
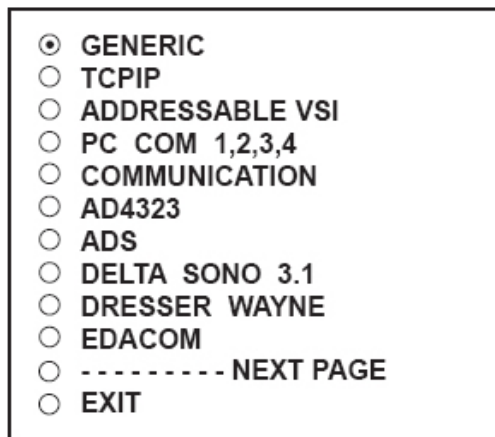


How to download IP Address from VSI-Pro

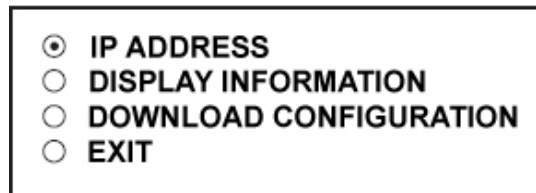
1.) To access the main-menu of the VSI-Pro, simultaneously hold down the “Down” & “Up” buttons and press and release the “Reset” button and then release the “Down” & “Up” buttons. This will take you to the main programming menu.



2.) Press the “Up” or “Down” button to move the cursor to “REGISTER SELECT” and press “Set”. The REGISTER SELECT menu will appear:



3.) Press the “Up” or “Down” button to move the cursor to “TCPIP” and press “Set” to sub menu will appear.



IP ADDRESS Setup

Press the “Up” or “Down” button to move the cursor to “IP ADDRESS” and press “Set” to change the IP address to the same as the IP address you wish to monitor.

EXAMPLE: If the IP address is 192.168.0.141, set the address on the TCPIP 232 Adapter using this menu.

<input checked="" type="radio"/>	IP ADDRESS 1 :	192
<input type="radio"/>	IP ADDRESS 2 :	168
<input type="radio"/>	IP ADDRESS 3 :	0
<input type="radio"/>	IP ADDRESS 4 :	141
<input type="radio"/>	EXIT	

INFORMATION DISPLAY Setup

Press the “Up” or “Down” button to move the cursor to “IP ADDRESS” and press “Set” to show or hide the Bank Information display.

<input checked="" type="radio"/>	INFORMATION 0	ON
<input type="radio"/>	INFORMATION 1	ON
<input type="radio"/>	INFORMATION 2	ON
<input type="radio"/>	INFORMATION 3	ON
<input type="radio"/>	EXIT	

4.) Press the “Up” or “Down” button to move the cursor to “Download Configuration” and press “Set” to execute. Make sure a TCPIP232 Adapter is connected and the VSI-Pro will download the configuration to this device.